



EAN code  
 CRM-2T/230V: 8595188112291  
 CRM-2T/UNI: 8595188112437  
 CRM-2T/WUNI: 8595188145305

**Technical parameters CRM-2T/UNI; 230V CRM-2T/WUNI**

**Power supply**

Supply terminals:	A1-A2	
Supply voltage:	UNI	AC/DC 12 – 240 V (AC 50-60 Hz)
Consumption (max.):	UNI	2 VA/1.5 W
Supply voltage:	230V	AC 230 V (50-60 Hz)
Consumption (max.):	230V	3 VA/1.4 W
Supply voltage:	WUNI	AC/DC 24 – 480 V (AC 50-60 Hz)
Consumption (max.):	WUNI	1.5 VA/1 W
Supply voltage tolerance:	-15 %; +10 %	

**Time circuit**

Time ranges:	t1: 0.1 s – 100 d, t2: 0.1 – 1 s	t1: 0.1 s - 1 h, t2: 25 ms - 1 s
Time setting:	rotary switch and potentiometers	
Time deviation:	5 % – mechanical setting	
Repeat accuracy:	0.2 % – set value stability	
Temperature coefficient:	0.01 %/°C, at = 20 °C (0.01 %/°F, at = 68 °F)	
Recovery time (max.):	150 ms	200 ms

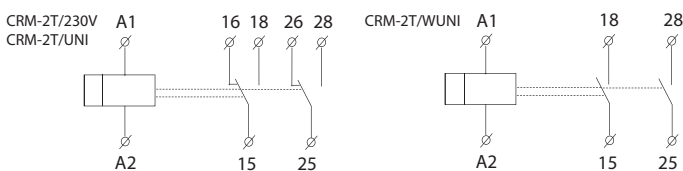
**Output**

Contact type:	2x changeover/SPDT (AgNi)	2x closing/SPST (AgNi)
Current rating:	16 A/AC1; PD. B300	8 A/AC1; PD. B300
Breaking capacity:	4000 VA/AC1, 384 W/DC1	2000 VA/AC1, 192 W/DC1
Inrush current:	30 A/< 3 s	10 A/< 3 s
Switching voltage:	AC 250 V/DC 24 V	
Power dissipation (max.):	2.4 W	1.2 W
Mechanical life:	10.000.000 ops.	60.000.000 ops.
Electrical life (AC1):	100.000 ops.	150.000 ops.

**Other information**

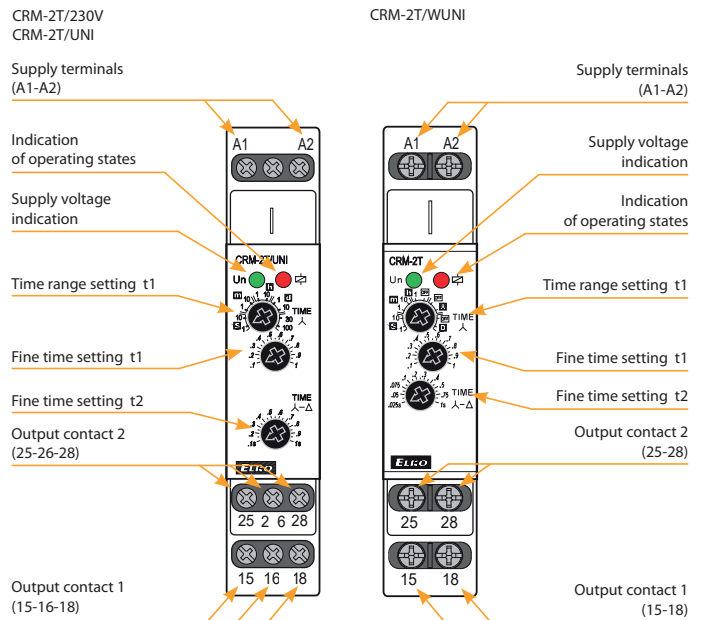
Operating temperature:	-20 .. +55 °C (-4 .. +131 °F)	
Storage temperature:	-30 .. +70 °C (-22 .. +158 °F)	
Dielectric strength:	supply - output 1	AC 4 kV
	supply - output 2	AC 4 kV
	output 1 - output 2	AC 4 kV
Operating position:	any	
Mounting:	DIN rail EN 60715	
Protection degree:	IP40 front panel/IP20 terminals	
Oversvoltage category:	III.	
Pollution degree:	2	
Cross-wire section; solid/stranded with ferrule (max.):	1x 4 (12), 2x 1.5 mm <sup>2</sup> (16 AWG)/1x 2.5 (14), 2x 1 mm <sup>2</sup> (17 AWG)	1x 4 (12), 2x 2.5 mm <sup>2</sup> (14 AWG)/1x 4 (12), 2x 1.5 mm <sup>2</sup> (16 AWG)
Dimensions:	90 × 17.6 × 64 mm	
Weight:	UNI - 78 g (2.8 oz), 230 - 73 g (2.6 oz), WUNI - 71 g (2.5 oz)	
Standards:	EN 61812-1	

**Symbol**



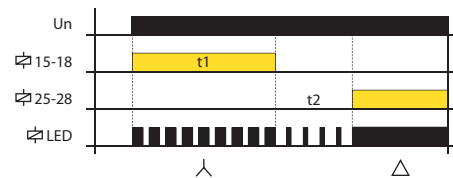
- Designed for delayed start of 3-phase asynchronous motors to limit starting current and mechanical shock during start-up.
- Time t1 (star):
  - time range setting by rotary switch
  - fine time setting by potentiometer
- CRM-2T/UNI, CRM-2T/230V:
  - time scale 0.1 s - 100 d divided into ten time ranges: 0.1 - 1 s / 1 - 10 s / 0.1 - 1 m / 1 - 10 m / 0.1 - 1 h / 1 - 10 h / 0.1 - 1 d / 1 - 10 d / 3 - 30 d / 10 - 100 d
- CRM-2T/WUNI:
  - time scale 0.1 s - 1 h divided into five time ranges: 0.1 - 1 s / 1 - 10 s / 0.1 - 1 m / 1 - 10 m / 0.1 - 1 h
- Time t2 (delay) between λ / Δ
  - fine time setting by potentiometer
- CRM-2T/UNI, CRM-2T/230V:
  - time scale: 0.1 - 1 s
- CRM-2T/WUNI:
  - time scale: 25 ms - 1 s
- Supply voltage: AC 230 V, AC/DC 12 - 240 V or AC/DC 24 - 480 V
- Output contact:
  - CRM-2T/230V, CRM-2T/UNI: 2x changeover, 16 A
  - CRM-2T/WUNI: 2x closing, 8 A
- Multifunction red LED flashes or shines depending on the operating state.

**Device description**



**Function**

**STAR/DELTA**



**Connection**

**Motor start-up (λ - Δ)**

