

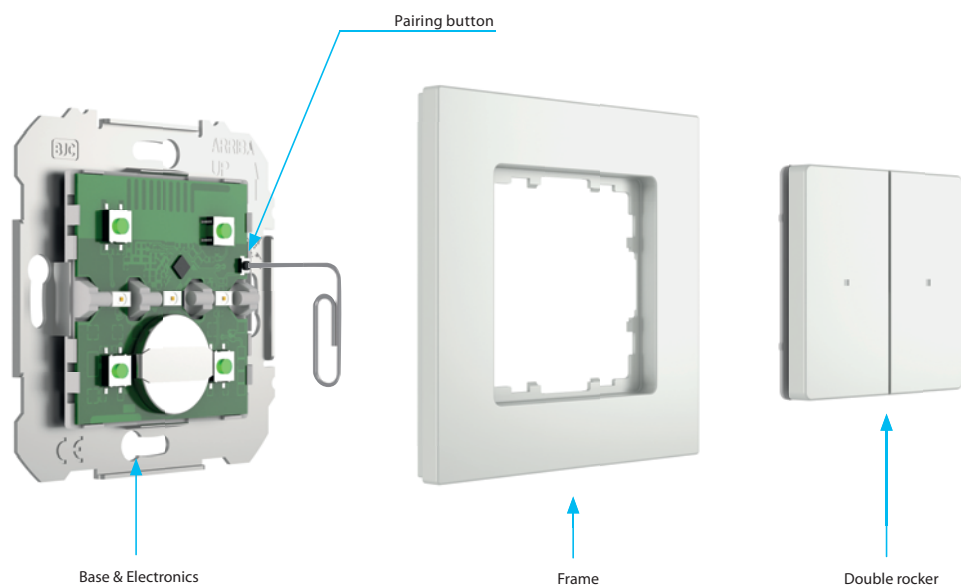
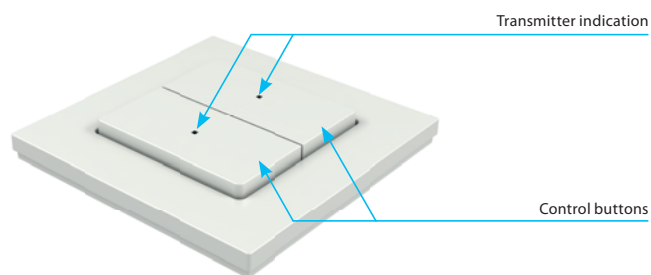


EAN code: RFWB-20/MPW: 8595188197151 RFWB-40/MPW: 8595188197168

Technical parameters	RFWB-20/MPW	RFWB-40/MPW
Supply voltage:	3 V CR 2032 battery	
Battery life:	around 5 years based on frequency of use	
Transmission indication:	red LED	
Number of buttons:	2	4
Communication protocol:	RFIO	
Frequency:	866 - 922 MHz	
Signal transmission method:	unidirectionally addressed message	
Range:	in open space up to 160 m	
Other data		
Operating temperature:	-10 to +50 °C	
Operating position:	any	
Mounting:	glue/screws	
Protection:	IP20	
Contamination degree:	2	
Dimensions frame:	90 x 90 x 16 mm	
Weight:	38 g	39 g
Related standards:	EN 60730, EN 63044, EN 300 220, EN 301 489	

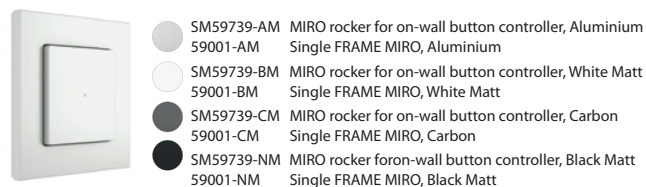
- On-wall button controller is used to control switches and dimmers (lights, gate, garage door, blinds, etc.).
- RFWB-20/MPW:** two buttons enable control of two units independently.
- RFWB-40/MPW:** four buttons enable control of four units independently.
- The flat design with level base makes it ideal for fast installation on any surface (fixation with adhesive or screws in the installation box).
- When pressing the button, it sends a set signal (ON/OFF, dimming, time switching OFF/ON, blinds up/down).
- Sending a command is indicated by a red LED.
- Selection of cover and frames designs from the wide range of Miro (Polar White in the base)
- Option of setting light scenes, where with a single press, you can control units of iNELS Wireless.
- Battery power supply (3 V CR 2032 battery - included in the supply) with battery life of around 5 years based on frequency of use.
- Range up to 160 m (in open space), if the signal is insufficient between the controller and unit, use the signal repeater RFRP-20N or protocol component RFIO2 that support this feature.
- Attention: The controller is paired with the elements using the pairing button.

Device description



Variants

9715 MIRO on-wall button controller - 2 buttons, Polar WHITE



9716 MIRO on-wall button controller - 4 buttons, Polar WHITE

